

# Little Creek Horse Farm 2019

a report from Little Creek Farm Conservancy



# A Message from the President

2019 was a year of positive change and growth as evidenced by record-breaking Horsefest attendance. Little Creek Horse Farm & Park is embraced and enjoyed by visitors, students, parents, neighbors and volunteers. The value of the Conservancy shows each time a child smiles, a volunteer feels a part of the family, a student accomplishes another goal and a visitor appreciates the park.

LCFC supports the Park with volunteerism, donations, fundraising, capital improvements, safety and security, recycling and other environmental initiatives. Atlanta Audubon's recent award to LCFC reflects the Conservancy's stewardship of this valuable green space.

LCFC thanks the DeKalb County Board of Commissioners; Department of Recreation, Parks and Cultural Affairs; Park Pride; Atlanta Riding Academy; Mark's Riding School; Stride Ahead; and the entire community that supports LCFC through donations and volunteerism.

*Dedicated to the memory of Edgar Zavala, long-standing barn employee, & Kathie Day, whose loving support served the community and horses. Their love of Little Creek exemplifies the community spirit of this unique park.*

***Tamara Dillard, President, LCFC***



# Little Creek Farm Conservancy Leadership

## BOARD

President, Tamara Dillard

*president@littlecreekfarmconservancy.org*

Vice President, Rene Iverson

*vicepresident@littlecreekfarmconservancy.org*

Treasurer, Peggy Berg

*treasurer@littlecreekfarmconservancy.org*

Interim Secretary, Lynn Leonard

*secretary@littlecreekfarmconservancy.org*

At-Large Community Liaison, Bobbi Woolwine

*outreach@littlecreekfarmconservancy.org*

## COMMITTEES

Membership: Julie Bakken, Valerie Morvan

Volunteers: Tamara Dillard/Karen Maloney

Hands on Horses: Rene Iverson, Christa Gogstad

Pony Rides: Rene Iverson

Communications: Valerie Morvan

Safety & Security: Peggy Berg, Anne Preston,  
Chris Lobkowicz

Environmental Committee: Bobbi Woolwine

Trees: Dana McDaniel

Recycling: Jenny McQuiston

Fly Predator Control: Nancy Scott

# Leadership DeKalb

LCFC was honored to be chosen as one of the non-profit organizations in DeKalb County to receive consulting assistance from Leadership DeKalb in 2019. The Champions of Little Creek team included Stephen Green, Phyllis Kitchens Thurmond, Dionne McGee, James Roland, Jamilah Stephens, Teresa Totten and Melvin Washington.

Following extensive research and analysis, the Champions provided a presentation, report and valuable recommendations to LCFC to continue to serve the park and the community.

*Thank you to the  
Champions &  
Leadership DeKalb*



# Membership

Little Creek Farm Conservancy, Inc. has **111** members that consist of boarders, riding students, parents, community members, volunteers, staff and others.

Members keep the “Neigh in the Neighborhood” by supporting the Conservancy’s stewardship of the park.

LCFC membership includes membership in the Park Pride affiliated Friends of the Park.

LCFC quarterly meetings at the park are open to members and the public. For information on becoming a member please visit:

[www.LittleCreekFarmConservancy.org](http://www.LittleCreekFarmConservancy.org)



# Friends of Little Creek Horse Farm & Park

Little Creek's Friends of the Park (FOP) Group is a proud affiliate of Park Pride. Through the FOP program, Park Pride shares wonderful resources with LCFC members such as:

- Tools to share during projects
- Expertise on project design, native plants, creek, trails and managing volunteers
- Special educational sessions, Park Pride workshops and an invitation to their annual conference



# LCFC On-Line

The Conservancy is dedicated to keeping the Park's community informed through social media!

**29,121** - Website Visits

[www.littlecreekfarmconservancy.org](http://www.littlecreekfarmconservancy.org)

**2318** - Facebook Fans

[www.facebook.com/littlecreekfarmconservancy](http://www.facebook.com/littlecreekfarmconservancy)

**96** - Instagram Fans

#instalcfc

[www.instagram.com/instalcfc](http://www.instagram.com/instalcfc)

**699** - Newsletter Subscribers

*Sign Up on the Conservancy Website!*



# Financial Results

In 2019 LCFC invested **\$10,807** in improvements to the barn, pastures, and paddocks and farm supplies, in addition to volunteer contributions of time, energy and materials.

LCFC had revenues of **\$39,210**. Net proceeds will be invested in DeKalb County's unique Little Creek Horse Farm & Park.

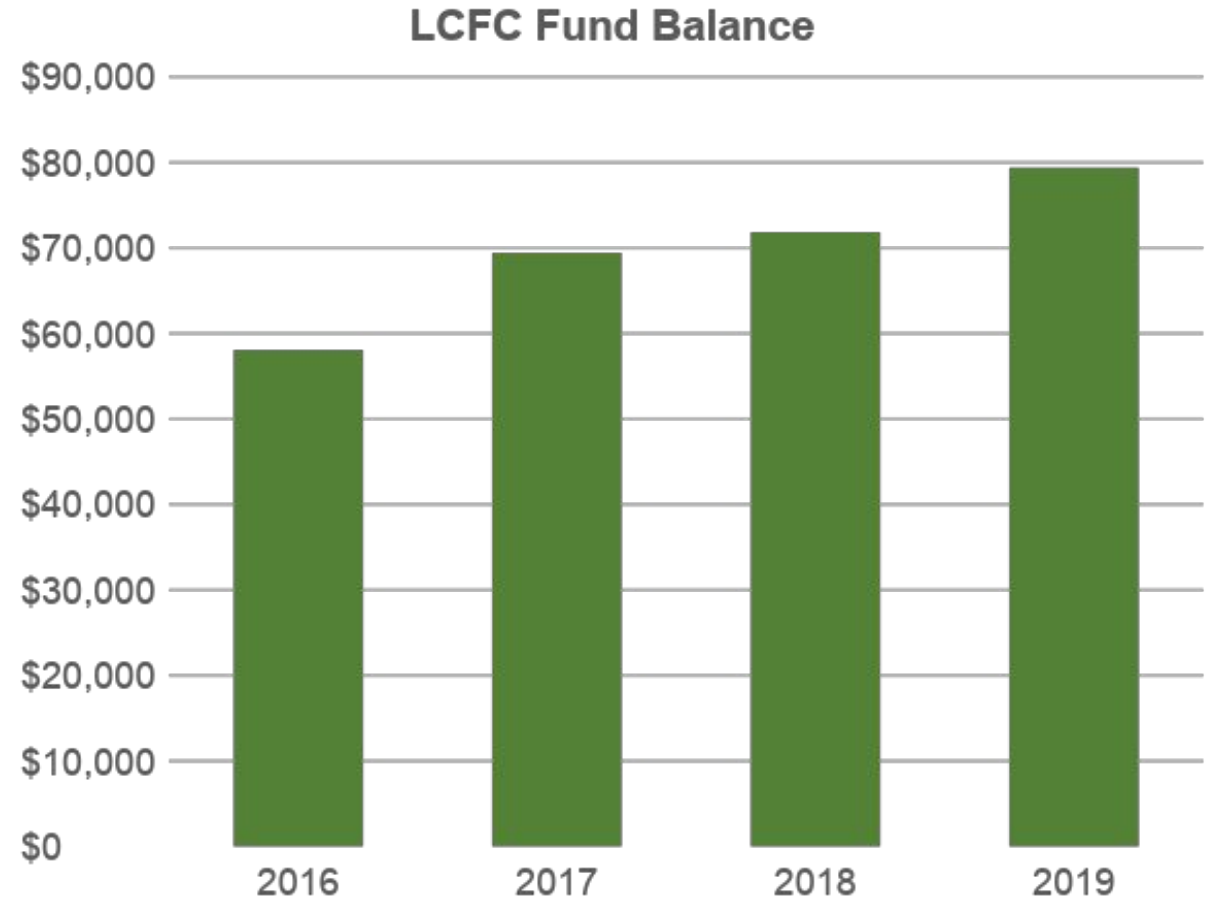
LCFC Statement of Activities 2019	
Income	
Donations to LCFC	\$15,553
Membership Income	\$3,009
Fall Event (Horsefest)	\$13,869
Hands on Horses	\$804
Schooling Shows & Other Events	\$2,268
Spring Event (Pony Rides)	\$2,562
Interest Income	\$265
Merchandise Sales	\$880
Revenues	\$39,210
Expenses	
Administration	\$6,690
Fall Event Expenses (Horsefest)	\$6,276
Hands on Horses Expenses	\$55
Other Events	\$3,452
Spring Event Expenses (Pony Rides)	\$2,295
Barn & Farm Improvements	\$9,319
Farm Supplies	\$1,488
Merchandise Purchases	\$175
Total Expenses	\$29,750
Net for 2019	\$9,459



# Financial Position

LCFC has **\$79,379** in funds for projects and matching grants to support Little Creek Horse Farm & Park as of December 31, 2019.

Thanks to the generosity of donors and contributions of volunteer time, we are in a good position to apply for grants and to re-invest in the Park.



# Why Donate?

The Conservancy is a 501c(3), and as a steward of the Park, accepts your donations toward:

- Programs Support
- Fundraising Support
- Environmental Initiatives
- Facility Improvements

Recent accomplishments include dressage mirrors and installation, parkland restoration, rodent control, landscape beautification and greenspace care, safety and security enhancements and first aid supplies.

Visit the website to make a donation today!



# LCFC Invests in the Park



# ATLANTA AUDUBON SOCIETY

Atlanta Audubon has awarded the **Habitat Restoration Fund Grant** to Little Creek Farm Conservancy for habitat restoration work to be completed in 2020 at the Little Creek Horse Farm & Park in DeKalb County.

As part of the grant, Atlanta Audubon will work with the Conservancy to restore a creek bank and create a bird and wildlife-friendly habitat in an under-utilized meadow area along the South Fork Peachtree Creek in the north-central portion of the Park.

[www.atlantaaudubon.org/news-feed/little-creek-farm-conservancy-reci](http://www.atlantaaudubon.org/news-feed/little-creek-farm-conservancy-reci)



# Mirror Installation

Dressage mirrors are a feature of barns where riders train with precision.

As promised in 2018, LCFC installed weightless mirrors in 2019 at one end of the indoor arena. Thank you to everyone who contributed to this project.

Unfortunately, our resident owl felt terribly threatened by the owl in the mirror and destroyed the surface. The mirrors are scheduled for re-surfacing and will be back on-line by Summer 2020.



# LCFC Delivers Community Events



# Spring Pony Rides

The Conservancy's annual pony rides event introduces generations of young DeKalb County residents to horses and the Park.

Providing a rare opportunity within city limits, children are delighted to interact with these gentle animals.

*A very special thank you to the many people & equine volunteers that made the day such a success.*

- **148** Pony riders
- **290** Visitors
- **\$2,562** Revenue



# Park RX Event

Dekalb County Recreation, Parks & Cultural Affairs partnered with the Board of Health and Park Pride to participate in this national event of park activities.

Little Creek's Park RX activity involved LCFC volunteers planting **River Oats** along the creek near the Picnic and Trail section of the Park. River Oats support creek banks and benefit native wildlife.

Work is already ongoing for the April 25, 2020 Park RX day event. Stay tuned!





# Horsefest 2019

2019 proved to be a big year for Horsefest, with the addition of a petting zoo, pony carousel and new demonstration teams. LCFC thanks all who worked tirelessly on this event!

- **172** People volunteers
- **24** Horse & pony volunteers
- **474 BIG** Pony ride loops
- **250 LITTLE** Pony ride loops
- **206** Petting zoo participants
- **1,276** Visitors – the most ever
- **\$13,869** Revenue



The Conservancy thanks **DeKalb County** for its support of this community event!



# 2019 Horsefest Sponsors

LCFC WOULD LIKE TO THANK ALL OF OUR

SPONSORS:



Covered Bridge Equine



Marshal Boyd Productions



Susan Stedman  
Dressage Trainer



Mark's Riding  
School



# Halloween Costume Parade & Potluck

LCFC appreciates the barn community and this small, special event is all about spending time together.

A favorite Halloween festivity, the Costume Parade unleashes the creative side in the equine community! Scary ghosts, knights, monsters and Captain Marvel appeared in Little Creek's Halloween parade on October 26, 2019.



# Winterfest

A casual and joyous gathering, Winterfest was enjoyed by students, boarders, Park employees, Community Bucket volunteers (after a work session earlier in the day) and a Quadrille performance by Mark's Riding School.

Vendors included pottery, knitwear and an LCFC merchandise table.

Thanks to all who attended, to the event chairs, the vendors and to City BBQ for providing discounts on the fabulous food.

Admission was an unwrapped toy for the 4th annual **Toys for Tots** drive - which was overflowing by the end!



# Programs & Committees



# Volunteer Program

This year, Conservancy volunteers contributed over **10,000** hours of support to Little Creek Horse Farm & Park. LCFC volunteers are priceless!

- Painting Fences
- Cleaning Pastures
- Greenspace Care
- Facility Maintenance
- Gardening & Beautification
- Cleaning Cobwebs
- Trash Pickup

**Thank you to all LCFC volunteers!**



# Group Volunteer Work Days

Little Creek welcomes volunteer groups of all sizes. Community volunteer organizations, school, corporate and scouting groups all participated in several workdays in 2019.

Fences were painted and repaired, pastures and trails were cleared of fallen branches, creek banks cleaned and much more.

- Community Bucket
- UPS
- Agnes Scott
- Emory University
- Georgia State University
- Intown Community School
- Cub Scout Pack 577

**THANK YOU!**



# Hands on Horses

Hands on Horses volunteers give demonstrations for retirement communities, scouts, families, care homes and other groups. Each group learns about the Park, horse behavior and anatomy, and can safely feed a treat to the 4-footed volunteer who stays behind the fence...a craft is available, too!

In 2019, this program doubled in number of sessions.

**178** Attendees

**\$804** Collected (some tours are free)

**7** Volunteer horses





# Mark's Cancer Research Program

For the second year, Mark's Riding School raised money for cancer research. This is personal for many people at Little Creek and LCFC is proud to support this program.

**\$2,000** including all Mark's fees from spring and fall Quadrille practice and other donations (100% of receipts) were donated to Emory Winship Cancer Center for 2019.

Please consider donating for 2020.



# Safety Committee

The Safety Committee works with Dekalb County to keep the facility safe from fire and other hazards. LCFC works with the barn community on safety policies for horses, students, volunteers and visitors. In 2019, the Committee worked on:

- Safer Wash Stall Fans
- Clearing Park Hazards
- Safety & Inclement Weather policies
- Labelling Tack Boxes
- Fire Hydrant Planning
- Improving Water Heaters
- Establishing a Horse First Aid Kit
- A Backup 3,000 Gallon Water Supply
- Evacuation Training for the Horses



Thank you to the DeKalb County Fire Station #9 for their assistance!

# Environmental Committee

The Environmental Committee focuses on projects to enhance the Park and educate the community about the importance of preserving green space and wildlife diversity.

## Initiatives:

- Atlanta Audubon Site Restoration Grant recipient  
[www.atlantaaudubon.org/news-feed/little-creek-farm-conservancy-recipient-of-atlanta-audubon-habitat-restoration-fund-grant](http://www.atlantaaudubon.org/news-feed/little-creek-farm-conservancy-recipient-of-atlanta-audubon-habitat-restoration-fund-grant)
- Community Creek Cleanup events
- Volunteer Ivy/Privet removal work days
- Park Rx - River Oats installation
- Registered Little Creek as **E-Bird Hotspot**  
<https://ebird.org/hotspot/L7492764>



# Recycling Committee

LCFC supports concerned community members participating in solutions for the Park.

An astute horse owner, Jenny McQuiston, and her children noticed that everyday items that could be recycled were being tossed due to lack of recycling pickup.

After submitting a Change Review form and receiving approval to move forward, the Recycling Committee was formed! Through these efforts, the park is now participating in weekly recycling pickup.



# Around the Park & In the News

Dekalb County Management, Barn Staff and the Equestrian Programs contribute daily to the care and future of Little Creek.

The DCTV team “Let’s Talk Dekalb” show in July 2019 highlighted Little Creek and the following pages share how special the entire barn community is.

[littlecreekfarmconservancy.org/dctv-interview-at-little-creek-horse-farm-park/](http://littlecreekfarmconservancy.org/dctv-interview-at-little-creek-horse-farm-park/)



# Dekalb County Support

The Conservancy welcomes and is grateful for the Park Management team; Director Chuck Ellis, Division Manager David Flaherty, Barn Supervisor Jamie Hodges, and all the barn staff.

LCFC and the community appreciate the investment and improvements that Dekalb County Recreation, Parks and Cultural Affairs and County Commissioners have provided to Little Creek in 2019.

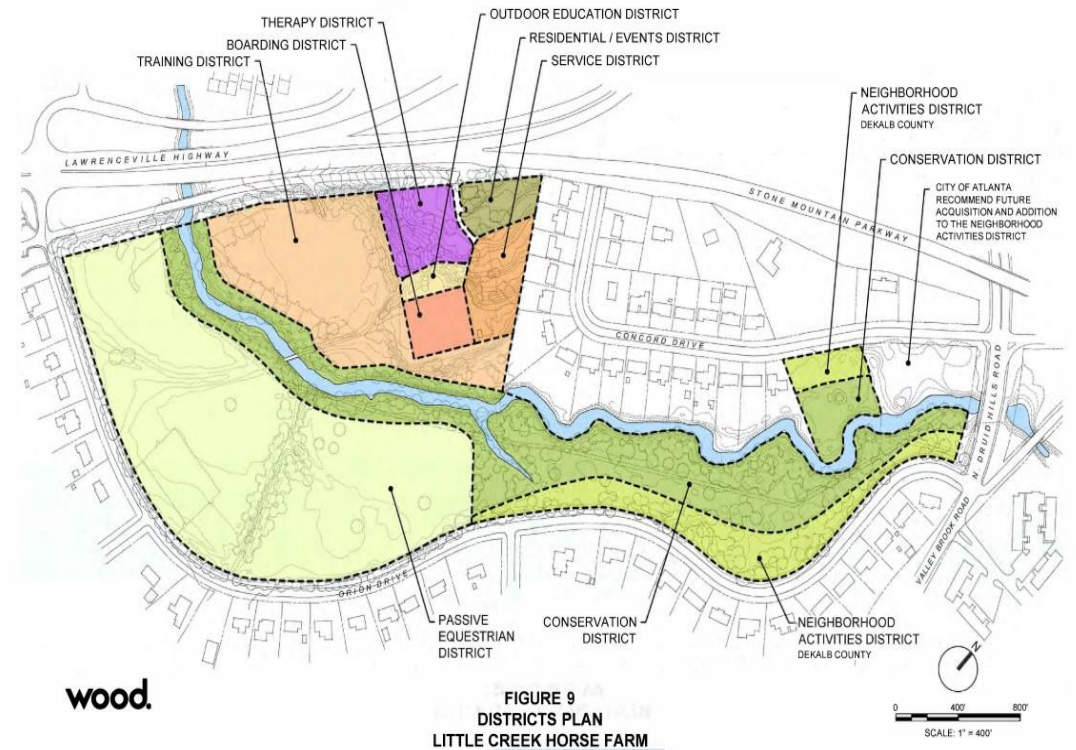
- o Increased Land Maintenance
- o Video Security Systems
- o New Lights (Arena/Jump Ring/Security)
- o Parking Lot Maintenance
- o Implementation of Commissioner Funded Projects



# DeKalb County's Park Master Plan

In January 2019, DeKalb County selected Wood Environment & Infrastructure Solutions, Inc. to prepare a Master Plan for Little Creek Horse Farm and Park (LCHFP). The process included an inventory of existing conditions, identification of opportunities and constraints, development and evaluation of concepts and selection of a final master plan. The objective was to build consensus for improvements and upgrades to serve the community.

This work in progress is being led by DeKalb County Recreation, Parks & Cultural Affairs.



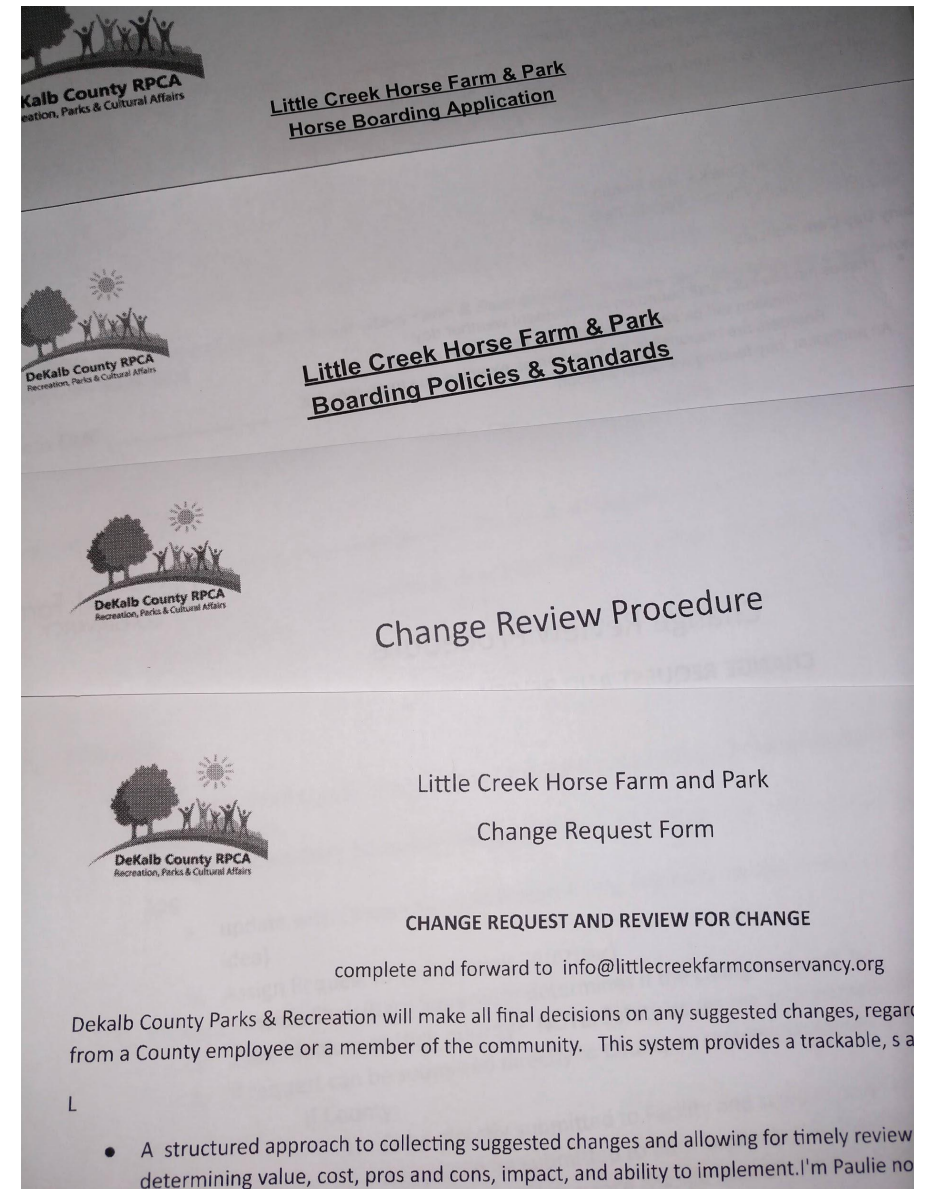
# Little Creek Task Force

The Park Management recognizes the importance of community input and implementation of new ideas for the Park. In 2019, a Task Force working group formed to assist the County with analyzing all changes or requests to ensure the success of Park initiatives.

The team consists of the representatives from; Park Management, LCFC, Atlanta Riding Academy, Mark's Riding School, StrideAhead, Inc., Borders, and Neighbor(s).

## Major Accomplishments:

- Change Review Process and Procedures
- Available Stall Policies and Procedures
- Guest Clinics Policy and Procedures
- Healthy Vending Machine





# Resident Riding Programs

Little Creek Horse Farm & Park provides equestrian lessons to the public through independently owned equestrian programs.

Certified instructors and their experienced assistants oversee all lessons. These popular programs provide over 5,000 lessons per year, for ages 8 and up.

Program information can be found at:  
[www.littlecreekfarmconservancy.org](http://www.littlecreekfarmconservancy.org).



# Stride Ahead

Your Invited! Join Stride Ahead in celebrating its 10th anniversary of providing Equine Assisted Therapies at it's **Galloping Gala Fundraiser** on May 7th, 2020! Visit [www.strideahead.org](http://www.strideahead.org) for more details.

Most exciting for Stride is the Little Creek Master Plan. With anticipated adoption of the plan, Stride Ahead is accelerating its capital campaign to fund a therapy arena, offices, a community room & a maintenance endowment.

## 2019 Highlights:

- Volunteers logged in 3,845 hours.
- Therapeutic riding program instructs 30 students weekly.
- Hippo-therapy served 16 Shephard Center patients.
- Mental Health programs provided growth and healing for addiction recovery groups, veterans with PTSD, teens with autism,
- 4 talented new board members Shamiracle Rankin, Joselyn Cassidy, Catherine Branch and Caroline Moise are strengthening the board's professional expertise.

## New Therapeutic Riding Program horses:

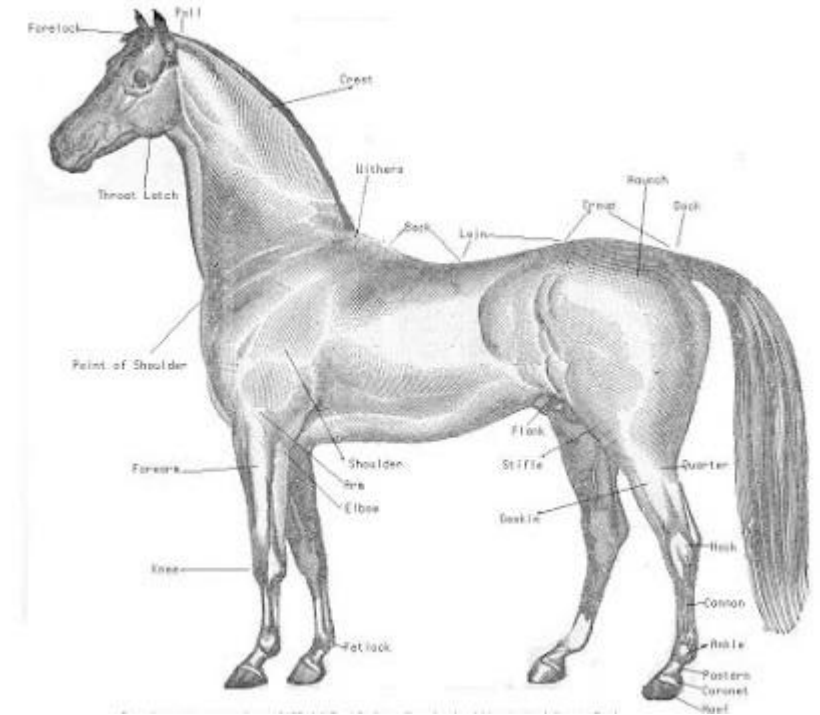
- Retired Atlanta Mounted Patrol Police Officer Jake, a Percheron(a generous gift from Alison Falinski to Stride Ahead, INC.)
- Volunteer Horse - Believe, Paint/Friesian



# Atlanta Riding Academy

Atlanta Riding Academy offers hunt seat riding lessons and promotes horsemanship education at Little Creek Horse Farm & Park. In 2019 Atlanta Riding:

- Maintained a client roster of **57** students and lessors.
- Taught an average of **123** lessons per month.
- Provided horses for Conservancy events such as HorseFest and Pony Rides.
- Promoted horsemanship at a summer camp themed Horsemanship Achievement Program.
- Launched the Atlanta Riding On-Line Guide to Horsemanship.
- Supported client participation in riding remonstrations and competed in horse shows at the Horse Park in Conyers.
- Welcomed a new lesson horse - Paisley, an Arabian Mare.



# Mark's Riding School

At any one time, Mark's Riding School works with **25** kids and **25** adults. Mark is assisted by Donna Coshatt and together they continue to share their love of horses and horsemanship with generations of riders. Mark and Donna are thrilled that Brad Williams recently joined their team.

School horses include Silverado, Cooper, Valor, and Sweetheart, as well as shared horses owned by boarders including: Big John, Max, Gracie, Dillon, Killington and Panda. In 2020, Norman will be joining Mark's crew of horses.

Mark's Riding School provides over **30** classes weekly, including individual and group lessons, serving people aged 7 to 85.

Information about riding lessons is available on the LCFC website and at the Barn Visitor Center.



# Little Creek Stable Squad

Meeting every Saturday at the barn, Assistant Instructor Donna Coshatt of Mark's Riding School, provides current students with additional horse care hands-on experience at no charge. Currently **25** students from ages 8 to 16 participate in this program.

Students learn about grooming and tacking horses, sweep wash stalls and aisles, clean tack and assist other students with what they have learned about horsemanship.

The youth learn confidence, leadership, teamwork, patience, kindness, and the importance of remaining calm, as horses are sensitive and mirror their caregiver's feelings.



# LCFC Calendar 2020

Check <a href="http://www.littlecreekfarmconservancy.org">www.littlecreekfarmconservancy.org</a> for the most up to date calendar!	
4H Volunteers/Education	Jan 18th
4H Volunteers / Education	Jan 25th
Emory Volunteers	Jan 20th
<b>Member Meeting #1</b>	Feb 8th, Sat, 11a
Spring Clean Up Week	April TBD
Park RX Activities (DeKalb Board of Health)	April 25th, Sat
<b>Member Meeting #2 (&amp; Officer Election)</b>	May 2nd. 11a
Amelia S. Cook In House Schooling	May 16th, Sat
<b>Member Meeting #3</b>	Aug 8th, 11am
Fall Clean Up Week	October TBD
Horsefest	Oct 18th, Sunday
Horses in Halloween Costume / Picnic	Oct 31st, Sat
<b>Member Meeting #4 &amp; Volunteer Apprec Luncheon</b>	Nov 7th Sat, 11a
Fall Schooling Show	Nov 14th, Sat
Winterfest / Community Bucket Work Day	Dec 5th, Saturday



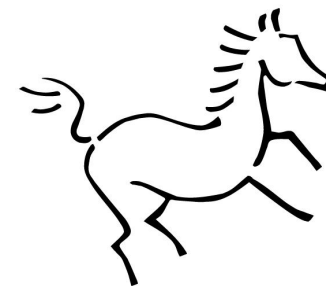
# Sign Me UP

Stay in touch with all that goes on at Little Creek Horse Farm & Park by visiting the Conservancy Social Media links:

[www.littlecreekfarmconservancy.org](http://www.littlecreekfarmconservancy.org)

- Sign up to receive the LCFC Newsletter
- Check out the [LCFC Events Calendar](#)
  - Member Meetings
  - Volunteer Work Days
  - Public Events
  - Environmental Meetings
  - Hands on Horses
- Learn more about all Volunteer Opportunities
- Become a LCFC Member and support the park
- Register to take a Hands On Horses Tour

[www.facebook.com/littlecreekfarmconservancy](https://www.facebook.com/littlecreekfarmconservancy)



**Little Creek Farm**  
CONSERVANCY

A word cloud of altruistic and service-related terms. The words are arranged in a roughly triangular shape, pointing to the right. The colors used are orange, green, purple, and brown. The largest word is 'VOLUNTEER' in purple. Other prominent words include 'HELPING', 'DONATIONS', 'COMMUNITY', 'GENEROUS', and 'MISSION'.

GENEROUS  
GIVING  
AWARENESS  
SERVICES  
ASSISTANCE  
MORAL  
CARE  
AID  
MISSION  
RESPECT  
TOGETHERNESS  
CHARITY  
ALTRUISTIC  
LIFE  
VOLUNTEER  
TIME  
COMMUNITY  
RESCUE  
SUPPORT  
DONATIONS  
CONTRIBUTION  
ASSISTED  
HOPE  
TEAMWORK  
PERSON  
ADULT